

RESOLUTION
(NO. 21)

RESOLUTION OF THE BOARD OF TRUSTEES OF THE TOWN OF CARLTON LANDING PROPOSING ANNEXATION OF ADDITIONAL TERRITORY INTO THE TOWN BOUNDARIES; ESTABLISHING THE DATE, TIME AND PLACE FOR A PUBLIC HEARING ON THE QUESTION OF ANNEXATION; AND DIRECTING PUBLICATION AND MAILING OF NOTICE OF THE PROPOSED ANNEXATION AND RELATED PUBLIC HEARING.

WHEREAS, the Board of Trustees of the Town of Carlton Landing, Oklahoma wishes to consider annexation of territory to include all of the territory described on Exhibit A hereto;

WHEREAS, pursuant to Title 11, Section 21-103 of the Oklahoma Statutes, a public hearing must be held on the question of annexation prior to adoption of an annexation ordinance; and

WHEREAS, pursuant to Title 11, Section 21-103(B) of the Oklahoma Statutes, notice of the hearing on the question of annexation must be published in a newspaper of general circulation and mailed to certain interested parties.

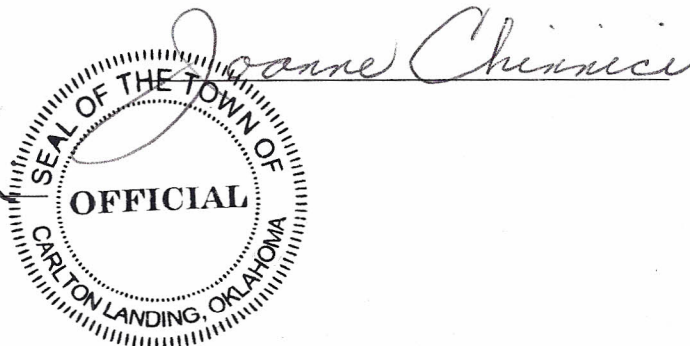
NOW, THEREFORE, BE IT RESOLVED BY THE BOARD OF TRUSTEES OF THE TOWN OF CARLTON LANDING that a public hearing will be held to consider the annexation of additional territory described on the attached Exhibit A, to occur at the regular meeting of the Board of Trustees on July 18, 2015 at 8:00 A.M to be held at the School Building, 10B Boulevard, Carlton Landing, Oklahoma;

BE IT FURTHER RESOLVED that the Town Clerk, Deputy Town Clerk or a designee of the foregoing shall publish notice of the proposed annexation and the scheduled hearing in a newspaper of general circulation in the county no later than July 3, 2015, and shall further mail notice of the proposed annexation and the scheduled hearing in accordance with Title 11, Section 21-103 of the Oklahoma Statutes no later than July 3, 2015.

APPROVED by the Board of Trustees and SIGNED by the Mayor of Carlton Landing, Oklahoma this 20th day of June 2015.

ATTEST:

Town Clerk



LEGAL DESCRIPTION

Carlton Landing
Annexation

October 21, 2014

A tract of land being a part of the Southwest Quarter (SW/4) and Southeast Quarter (SE/4) of Section Thirty-one (31), Township Nine (9) North, Range Seventeen (17) East of the Indian Meridian, Pittsburg County, Oklahoma, being more particularly described as follows:

Beginning at the Northwest (NW) Corner of said Southwest Quarter (SW/4), said point being the POINT OF BEGINNING;

THENCE North 88°26'24" East, along and with the North line of said Southwest Quarter (SW/4) and Southeast Quarter (SE/4), a distance of 5,286.09 feet to the Northeast (NE) Corner of said Southeast Quarter (SE/4);

THENCE South 01°21'54" East, along and with the East line of said Southeast Quarter (SE/4), a distance of 1,324.17 feet to a point on the U.S. Army Corp of Engineers Lake Eufaula boundary line;

THENCE along and with the U.S. Army Corp of Engineers Lake Eufaula boundary line the following nine (9) calls:

1. South 30°30'44" West, a distance of 329.76 feet;
2. South 30°33'31" West, a distance of 1,229.19 feet to a point on the South line of said Southeast Quarter (SE/4) ;
3. South 88°30'58" West, along and with the South line of said Southeast Quarter (SE/4), a distance of 1,154.51 feet;
4. North 54°33'56" West, departing said South line, a distance of 824.38 feet;
5. North 46°26'14" West, a distance of 467.06 feet;
6. South 88°30'15" West, a distance of 658.42 feet;
7. North 64°56'32" West, a distance of 738.24 feet;
8. South 88°32'27" West, a distance of 330.53 feet;
9. South 61°58'44" West, a distance of 738.04 feet to a point on the West line of said Southwest Quarter (SW/4);

THENCE North 01°35'07" West, along and with the West line of said Southwest Quarter (SW/4), a distance of 1,812.87 feet to the POINT OF BEGINNING.

LESS & EXCEPT ORIGINAL MUNICIPALITY

Prepared by Johnson & Associates, Inc. (Robert R. Hume P.L.S. 1531)
S:\2732\Legals\2732-Annexation SE4 SW4 Sec. 31.docx

A tract of land being a part of the Southwest Quarter (SW/4), and the Southeast Quarter (SE/4) of Section Thirty-one (31), Township Nine (9) North, Range Seventeen (17) East of the Indian Base Meridian, Pittsburg County, Oklahoma, being more particularly described as follows:

Commencing at the Southwest (SW) Corner of the Southeast Quarter (SE/4) of said Section Thirty-One (31);

THENCE North 88°30'58" East, along and with the South line of the Southeast Quarter (SE/4) of said Section Thirty-One (31), a distance of 660.05 feet to a found U.S. Army Corp of Engineers brass cap monument being the POINT OF BEGINNING on the U.S. Army Corp of Engineers Lake Eufaula boundary line;

THENCE along and with the U.S. Army Corp of Engineers Lake Eufaula boundary line the following Two (2) calls;

1. North 54°33'56" West, departing said South line, a distance of 824.38 feet to a found U.S. Army Corp of Engineers brass cap monument on the West line of the Southeast Quarter (SE/4) of said Section Thirty-one (31);
2. North 46°26'14" West, a distance of 419.23 feet to a point on the U.S. Army Corp of Engineers Lake Eufaula boundary line, said point being 47.82 feet Southeast (SE) of a found U.S. Army Corp of Engineers brass cap monument;

THENCE North 38°12'22" East, departing said U.S. Army Corp of Engineers Lake Eufaula boundary line, a distance of 223.75 feet;

THENCE on a non tangent curve to the right, having a radius of 230.00, a chord bearing of North 42°15'07" West, a chord distance of 74.22 feet, and an arc length of 74.55 feet;

THENCE on a curve to the left, having a radius of 175.00 feet, a chord bearing of North 33°31'59" West, a chord distance of 3.46 feet, and an arc length of 3.46 feet;

THENCE North 55°54'02" East, a distance of 60.00 feet;

THENCE on a non tangent curve to the left, having a radius of 375.00 feet, a chord bearing of North 23°08'40" East, a chord distance of 311.23 feet, and an arc length of 320.93 feet;

THENCE North 01°22'23" West, a distance of 1.91 feet;

THENCE North 88°25'32" East, at a distance of 25.00 feet passing the East line of the Southwest Quarter (SW/4) of said Section Thirty-one (31), said point being 845.22 feet North of a found U.S. Army Corp of Engineers brass cap monument lying on the East line of the Southwest Quarter (SW/4) of said Section Thirty-one (31) and continuing along said line, a total distance of 789.73 feet;

THENCE on a non tangent curve to the left, having a radius of 3,370.00 feet, a chord bearing of South 01°18'09" East, a chord distance of 8.00 feet, and an arc length of 8.00 feet;

THENCE North 88°25'32" East, a distance of 333.09 feet;

THENCE South 62°08'42" East, a distance of 12.00 feet;

THENCE on a non tangent curve to the left, having a radius of 2,973.00 feet, a chord bearing of South 26°53'50" West, a chord distance of 99.37 feet, and an arc length of 99.37 feet;

THENCE on a non tangent curve to the left, having a radius of 3,488.00 feet, a chord bearing of South 63°25'41" East, a chord distance of 558.68 feet, and an arc length of 559.28 feet;

THENCE South 68°01'17" East, a distance of 194.33 feet;

THENCE on a non tangent curve to the right, having a radius of 2,220.50 feet, a chord bearing of North 27°47'09" East, a chord distance of 128.55 feet, and an arc length of 128.57 feet;

THENCE South 60°33'20" East, a distance of 551.70 feet to a point on the U.S. Army Corp of Engineers Lake Eufaula boundary line;

THENCE along and with the U.S. Army Corp of Engineers Lake Eufaula boundary line the following Two (2) calls;

1. South 30°33'31" West, a distance of 860.35 feet to a found U.S. Army Corp of Engineers brass cap monument on the South line of the Southeast Quarter (SE/4) of said Section Thirty-one (31);
2. South 88°30'58" West, along and with the South line of the Southeast Quarter (SE/4) of said Section Thirty-one (31), a distance of 1,154.51 feet to a found U.S. Army Corp of Engineers brass cap monument, the POINT OF BEGINNING.

LESS & EXCEPT TERRITORY ANNEXED BY ORDINANCE NO. 1

A tract of land being a part of the Southwest Quarter (SW/4) of Section Thirty-one (31), Township Nine (9) North, Range Seventeen (17) East of the Indian Meridian, Pittsburg County, Oklahoma, being more particularly described as follows:

COMMENCING at the Northwest (NW) Corner of said Southwest Quarter (SW/4);

THENCE South 01°35'07" East, along and with the West line of said Southwest Quarter (SW/4), a distance of 737.98 feet to the POINT OF BEGINNING

THENCE North 57°55'16" East, departing said West line, a distance of 146.47 feet;

THENCE along a curve to the right, having a radius of 630.00 feet, a chord bearing of North 79°10'05" East, a chord distance of 456.62 feet, and an arc length of 467.25 feet;

THENCE South 79°35'04" East, a distance of 131.16 feet;

THENCE along a curve to the right, having a radius of 1,130.00 feet, a chord bearing of South 64°04'26" East, a chord distance of 604.36 feet, and an arc length of 611.81 feet;

THENCE on a reverse curve to the left, having a radius of 970.00 feet, a chord bearing of South 57°09'28" East, a chord distance of 289.91 feet, and an arc length of 291.00 feet;

THENCE South 65°45'08" East, a distance of 626.93 feet;

THENCE along a curve to the right, having a radius of 230.00 feet, a chord bearing of South 57°25'14" East, a chord distance of 66.66 feet, and an arc length of 66.89 feet;

THENCE on a reverse curve to the left, having a radius of 420.00 feet, a chord bearing of South 62°59'03" East, a chord distance of 201.73 feet, and an arc length of 203.72 feet;

THENCE South 76°52'46" East, a distance of 74.03 feet;

THENCE along a curve to the right, having a radius of 235.00 feet, a chord bearing of South 55°29'22" East, a chord distance of 171.42 feet, and an arc length of 175.46 feet;

THENCE South 55°54'02" West, a distance of 60.00 feet;

THENCE on a reverse curve to the left, having a radius of 175.00 feet, a chord bearing of North 55°29'22" West, a chord distance of 127.65 feet, and an arc length of 130.66 feet;

THENCE North 76°52'46" West, a distance of 74.03 feet;

THENCE along a curve to the right, having a radius of 480.00 feet, a chord bearing of North 62°59'03" West, a chord distance of 230.54 feet, and an arc length of 232.82 feet;

THENCE on a reverse curve to the left, having a radius of 170.00 feet, a chord bearing of North 57°25'14" West, a chord distance of 49.27 feet, and an arc length of 49.44 feet;

THENCE North 65°45'08" West, a distance of 626.93 feet;

THENCE along a curve to the right, having a radius of 1,030.00 feet, a chord bearing of North 57°09'28" West, a chord distance of 307.84 feet, and an arc length of 309.00 feet;

THENCE on a reverse curve to the left, having a radius of 1,070.00 feet, a chord bearing of North 64°04'26" West, a chord distance of 572.27 feet, and an arc length of 579.32 feet;

THENCE North 79°35'04" West, a distance of 131.16 feet;

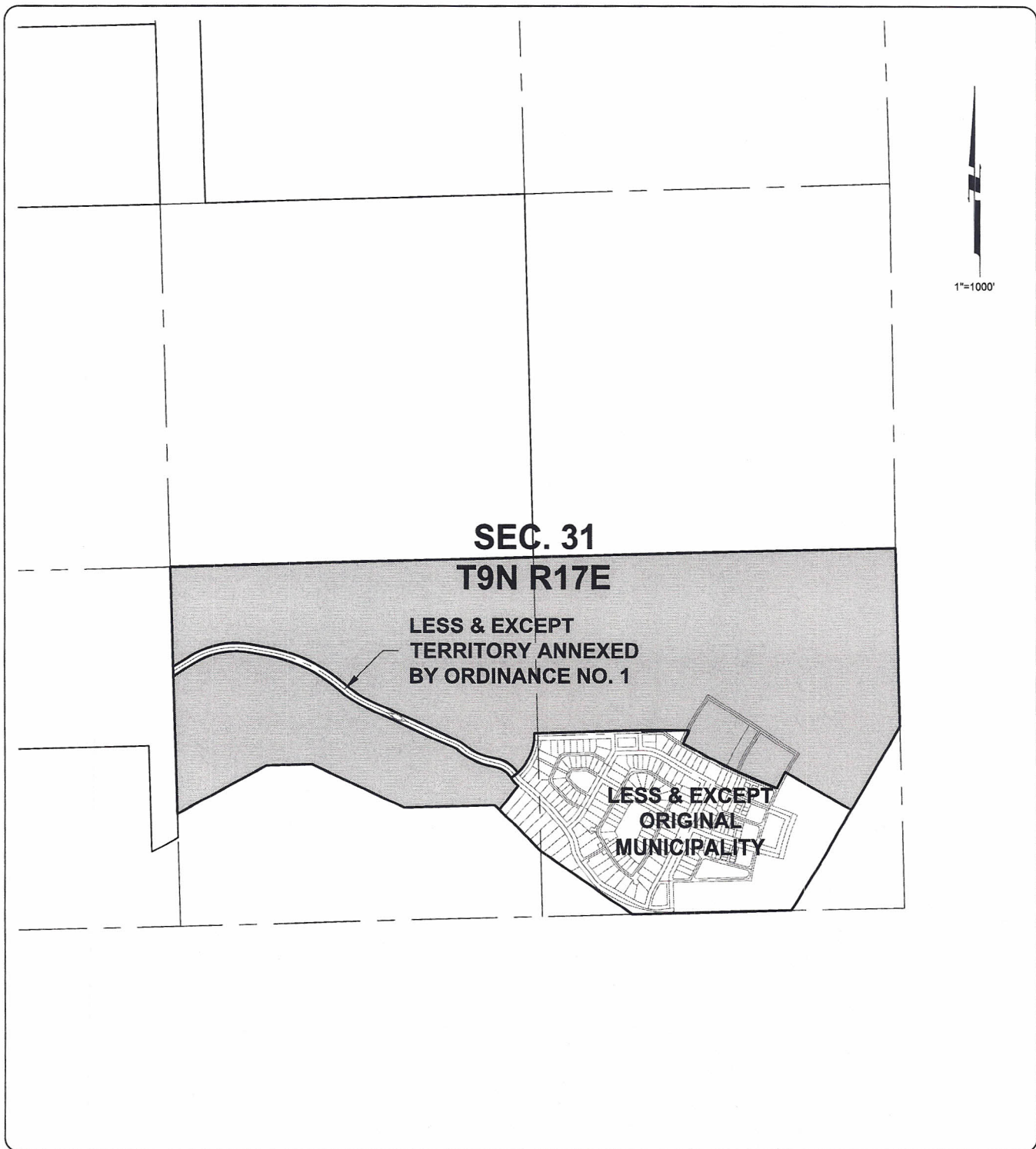
THENCE along a curve to the left, having a radius of 570.00 feet, a chord bearing of South 79°10'05" West, a chord distance of 413.13 feet, and an arc length of 422.75 feet;

THENCE South 57°55'16" West, a distance of 181.81 feet to a point on the West line of the Southwest Quarter (SW/4) of said Section Thirty-one (31);

THENCE North 01°35'07" West, along and with the West line of said Southwest Quarter

(SW/4), a distance of 69.63 feet to the POINT OF BEGINNING.

Said tract of land containing 8,232,257 square feet or 188.9866 acres, more or less.



ACAD FILE: H:\2732\Exhibit\2732-Annexation SE4 SW4 Sec.31.dwg, 10/21/2014 10:15 AM, Matt Johnson
XREFS LOADED:

Copyright © 2014 Johnson & Associates, Inc.

Proj. No.: 2732
Date: 10-21-14
Scale: 1"=1000'

CARLTON LANDING
PITTSBURG COUNTY, OKLAHOMA
ANNEXATION



Johnson & Associates, Inc.
1 E. Sheridan Ave., Suite 200
Oklahoma City, OK 73104
(405) 235-8075 FAX (405) 235-8078
Certificate of Authorization #1484 Exp. Date: 06-30-2015
• ENGINEERS • SURVEYORS • PLANNERS •